



BREATHE EASIER...

...with a **FREE Lung Screening!**

\$370 value

Are you at risk for lung cancer? Radiology Associates of Hartford and Saint Francis Hospital and Medical Center have teamed up so you can breathe easier when you schedule low-dose CT lung screening. We are accredited by the American College of Radiology as Low Dose Lung CT Screening Centers.

Superior to chest X-ray

Studies have shown that current and former smokers, with a 30 year smoking history, ages 50-79 years old, evaluated with CT have a much greater survival rate than those evaluated with other methods. What's more, CT can find smaller, earlier stage and more treatable cancers than X-ray.

FREE Lung Screening in honor of the Great American Smokeout®

Time is of the essence, so call (860) 969-6400 right away to make your appointment!

A written order from your doctor is required.

When: Saturday, January 19th, 8:30am - 12:30pm

Where: **Radiology Associates of Hartford Glastonbury**
31 Sycamore Street, Suite 102, Glastonbury

Saint Francis Hospital and Medical Center
114 Woodland Street, Hartford

If you're at risk for lung cancer, put your mind at ease with this fast, easy and completely non-invasive test!

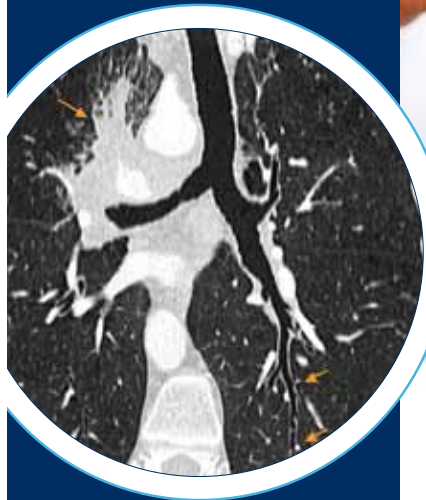
Who can be screened?

Screening for lung cancer is recommended for two high risk groups.

The first high risk group consists of those 55+ who have smoked for 30+ years. (People who quit smoking more than 15+ years ago are excluded.)

The second high risk group consists of those 50+ who have smoked for 20+ years and have at least one more risk factor (other than secondhand smoke).

If you do not have insurance, we will scan you for free. If you have insurance, we will bill your insurance (pre-authorization from your insurance company may be required).



RISK FACTORS FOR LUNG CANCER:

- Tobacco smoking or secondhand smoke
- Contact with radon
- Contact with asbestos or other cancer-causing agents
- Personal history of certain other cancers
- Family history of lung cancer
- Having had other lung diseases

RAH

RADIOLOGY ASSOCIATES of HARTFORD, P.C.



Trinity Health
Of New England

Saint Francis Hospital
and Medical Center

(860) 969-6400

www.rahxray.com